

P E R F E C T P A I N L E S S H A I R R E M O V A L



Genesis *ICE*® PLATINUM

MEDICAL- DIODE LASER HAIR REMOVAL

Safely, quickly and effectively reduce
hair permanently

Tel: +46 70 444 94 80 E-mail: kontakt@medicalsistemas.se
For more information: www.medicalsistemas.com
Headquarters: Medical Systems, Elkvarnsgatan 5, Uppsala, SWEDEN

MEDICAL **SYSTEMS** 
for Superior Results

Medical CE



ISO 13485

Genesis *ICE*[®] PLATINUM

Genesis ice PLATINUM offers the synergistic benefits of the 4 most effective wavelengths for hair removal, each targeting different structures within the hair follicle. The 4 main anatomical targets include the bulge, bulb and papilla. With an improved patient experience and a business-oriented approach, it can create a unique and result-driven new solution in the world of professional hair removal.



Efficacy:
Laser energy delivered more efficiently.



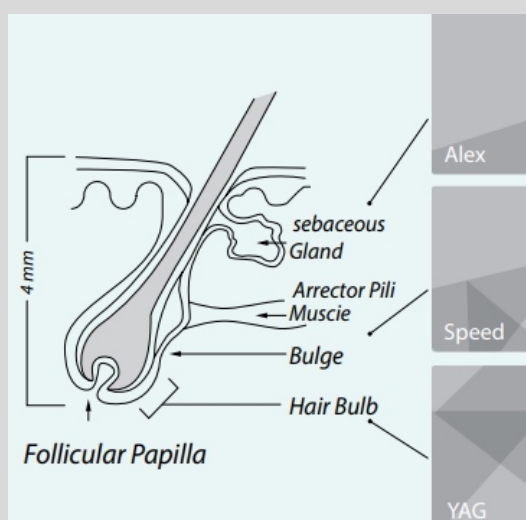
Safety:
Lower fluence is required per pulse.



Decreased pain:
Unique mechanism reduces pain during treatment.



Treatment time:
Rapid coverage rate without gel or anesthesia. Quickly and comfortably.



HR Beginner

SHR Standard

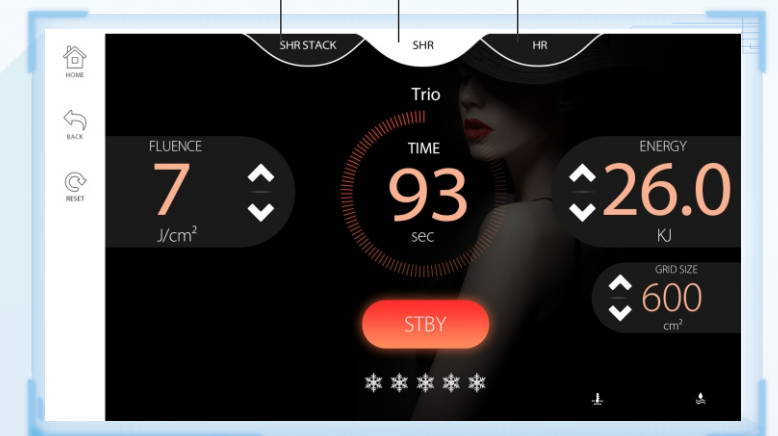
SHR STACK Major

◆ 15.1-INCH DISPLAY

It is easy to operate

◆ 4K SUPER CLEAR

Clear display



SCREEN LINKAGE

Handle screen intelligent linkage

Touch screen of handles, directly adjust parameters
Convenient and fast operation

HANDLE

FOUR WAVELENGTHS

Allowing you to customize laser hair removal treatments for all skin types

755nm

755nm recommended for treating pale skins (phototypes I-III) with fine hair. Indicated for removing the residual hair of the last sessions. With more superficial penetration, the 755nm wavelength targets the Bulge of the hair follicle and is especially effective for superficially embedded hair in areas such as the eyebrows and upper lip.

808nm

808nm recommended for treating all skin phototypes, particularly patients with a great density of hair and first sessions. Its deep penetration capabilities target the Bulge and Bulb of the hair follicle while moderate tissue depth penetration makes it ideal for treating the arms, legs, cheeks and beard.

940nm

940nm wavelength effectively penetrates deep and absorbed by the target chromophore. The adequate pulse duration, energy density and epidermal cooling ensure an sufficient thermal damage to the target tissue without damaging the surrounding tissue to achieve effective hair removal.

1064nm

1064nm indicated for treating dark phototypes (III-IV tanned, V and VI). The 1064nm offers the deepest penetration of the hair follicle, allowing it to target the Bulb and Papilla, as well as treat deeply embedded hair in areas such as the scalp, arm pits and pubic areas.

755nm
808nm
940nm
1064nm



Genesis *ICE*[®]
PLATINUM



DIODE LASER HAIR REMOVAL

Extra strong performance

"3000W German  DILAS Laser Bars"

Perfect painless hair removal,
more high-end!

SPOT SIZE (handle can be selected)



ADVANTAGES OF HSPC

The latest research and development cooling system: The handle is upgraded from double-sided cooling to 360-degree circulating cooling, lowest temperature could down to -15C° within a few seconds. Perfect PAIN-FREE hair removal, more high-end.



GenesisICE[®] PLATINUM



- System customization •.....
- Customizable screen logo •.....
- Customizable language •.....
- Touch screen of handles •.....
- Customizable shell logo •.....
- Customizable function •.....
- Customizable machine colour •.....
- Customizable lampshade •.....
- Customizable casing •.....


Ice Cooling
Effect


All Skin
Color


Safe and
Painless


Multi-size
Spot


80-100
millions shots


4 Highly Effective
Wavelengths

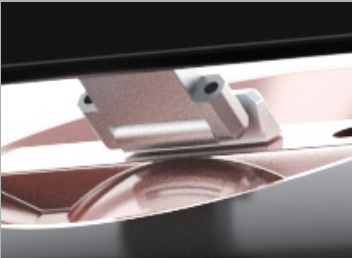

Permanent
Hair Reduction


Mode Selectable
Men and Women

OWNING MODEL DESIGN FACTORY ODM FOR WORLDWIDE DISTRIBUTORS



User Interface



Adjustable Angle



Customized Logo



Ergonomic Armrest



Key Switch



DLNA Handle



Socket



Handle Plug

In order to provide you with optimal treatment possibilities,
the vertical Genesis Ice Platinum comes with.

TECHNICAL SPECIFICATIONS:

Laser type	755/808/940/1064nm 4 wavelengths
Display system	15.1 inch true color touch screen
Laser handle shots	80-100 millions shots
Energy	10~140 j/cm2, adjustable
Pulse Duration	10~400ms adjustable
Frequency	1~15Hz
Cooling system	Air + Water + Double TEC Semi-Conductor + Annular cooling Chip
Power	3000w
Spot size	15*15mm/ 15*30mm; Diameter 8 mm (Optional)
Crystal temperature	-10~-5°C
Power requirement	AC220/110V, 50/60HZ