

The built-in power meter of the Or-Light unit allows the energy levels to be measured at any time. It also allows the Or-Light unit to automatically recalibrate the energy output if necessary, so as to guarantee optimum efficiency.

Although Yperion is the only company proposing the free replacement of applicators, it is nevertheless the only company offering you the possibility to control their perfect efficiency and ask for a new one free of charge if necessary.



TECHNICAL INFORMATION

- Fluence:
8 to 20 joules/cm² for hair-removal
6 to 14 joules/cm² for photolifting®
- Duration of pulse:
15/30/50 ms for hair-removal
10/15 ms for photolifting®
- Type of pulse:
Monopulse SPL®
- Handheld applicator:
- Size of quartz:
7,5 cm² for hair-removal
5 cm² for photolifting®
- Automatic recalibration
- Frequency of pulse:
1 Hertz (1 pulse/second)
- Cooling circuit:
- water
- water flow: 1,8 l/mn
- deionising cartridge
- Built-in power meter
- Tactile screen
- Machine designed for easy updating



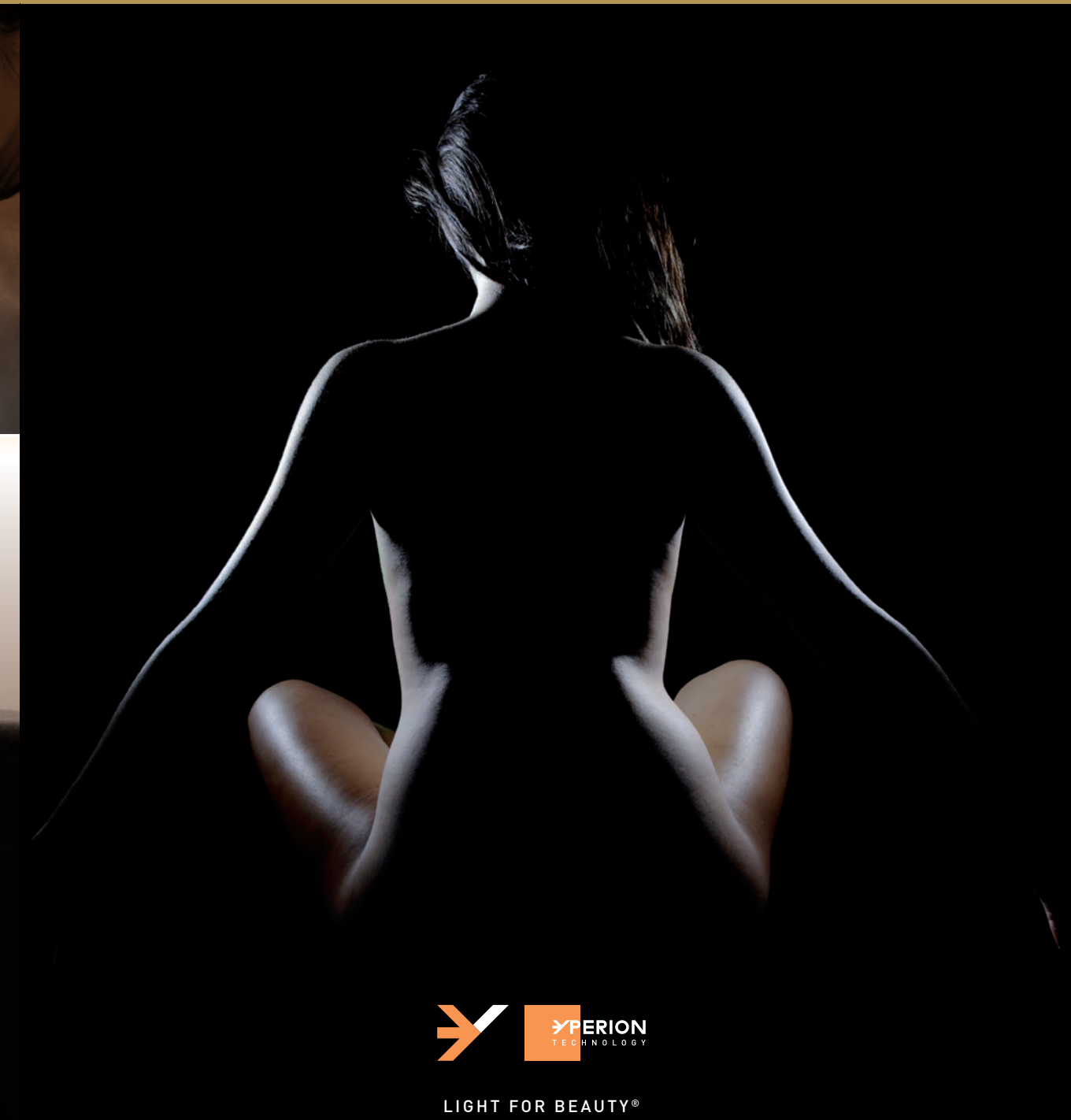
YOUR OFFICIAL DISTRIBUTOR:



LIGHT FOR BEAUTY®

2, rue Beethoven 75016 Paris
T: + 33 (0) 1 56 89 10 40 / www.yperion.fr

Photos: © Megalot, Richard Schlang, DR Design, Philippe David



LIGHT FOR BEAUTY®



HAIR-REMOVAL

PHOTOLIFTING®

TECHNOLOGY

Or-light is a painless and long lasting hair-removal technique that beauticians will have no trouble mastering after a short training session. After applying a gel onto a designated shaven patch of skin, the handheld applicator sends a succession of extremely rapid pulsed light flashes, each lasting just a few milliseconds, to treat the zone.

PHILOSOPHY

Yperion personnel have all managed, or worked in beauty salons and the cosmetic industry and therefore perfectly understand your needs and expectations. Their experience and expertise have forged the company's philosophy which focuses on four main and essential points, better summarized by the anagram: **R.A.P.A.S.**

RELIABILITY, AFFORDABILITY, PROFITABILITY AND SUPPORT



RELIABILITY

The integrated power meter, an Or-light exclusive technology, gives an accurate answer to the question of reliability: at any moment, you will know the exact power of the applicator. Therefore, and, when necessary, the appropriate re-calibration automatically will be achieved giving a total guarantee about the pulse's efficiency and a constant performing treatment.

AFFORDABLE AND PROFITABLE

Or-light is particularly affordable and profitable thanks to its innovative "smartcard" concept.

The Or-Light machine requires only a minimal initial outlay.

1. You can elect to buy the machine at hardware factory cost price and thereafter pay according to your own, and your clients needs. A minimal monthly fee allows you to receive a "smartcard" or "pulses card" charged with 7500 pulses. If your client needs more pulses, yours and his cost price for each additional pulse decrease drastically.
2. If you wish to do so, you can also elect to buy the machine at full price without the smart card system.

SUPPORT

We are eager to build genuine partnerships with our professional clients.

1. If you choose to buy the machine with the smart card system we will offer the following services free of charge:
 - A full technical and practical training session at Yperion headquarters in Paris for our clients and/or their designated representatives.
 - Replacement of the handheld applicator whenever needed.
 - Full maintenance of your Or-Light unit by a very reactive technical staff.

When your 3 years contract comes to an end, you are free and welcome to continue the initial formula. In that case, your monthly smartcard price decreases significantly and you will still keep the advantages of free maintenance and free handheld applicators.

2. If you choose to buy the machine without the smart card system, the conditions will be as follows:
 - Payment of a yearly maintenance fee (after warranty's expiration)
 - Payment of the handheld applicator when a replacement is needed.

Forget arduous, painful and unreliable techniques of the past such as wax or tweezers, forget about unsuitable and badly or non-performing IPL hair-removal machines.

Yperion offers you 10 years of experience in the field, with over 2200 machines of its first IPL generation series (L600, L800 and L900) successfully installed on the market, at full customers satisfaction.

Offer your customers hair free and smooth skin for a much longer time thanks to the proven mastering of Intense Pulsed Light technology by a reliable company.

Or-light is 3 times faster than any other competing device on the market.

The highly effective Yperion method allows you to gain significant time during each session as well as effectiveness and profitability, immediately establishing your business at the forefront and as a leader of the beauty industry.

PERSONALIZED TREATMENTS

However, each person is different, with distinct skin and hair types, and requires adequate hair-removal treatment. Or-Light is programmed to adapt to a number of combinations of skins and hair colors.

RESULTS IN JUST A FEW SESSIONS

Or-light guarantees the removal of 90% of unwanted hair in just a few sessions. The results are already visible and convincing right after the first treatment, with 10% to 30% of unwanted hair removed.

The hair root is permanently disabled through a combination of heat given out by a light radiation emitted in a particular wave length. The melanin presents in the skin and the hair transmits the energy to the hair follicle and cauterizing surrounding vessels.

The disabled hair follicle is unable to grow new hair.

An initial and thorough assessment shall be made by the practitioner to estimate the type of treatment and the number of sessions required for each individual client, including characteristics of the hair and skin type.

Between 6 and 10 sessions are generally needed for a perfect final result.

Or-Light can also provide highly effective skin repair and photo-lifting treatments using light therapy.

Or-Light can be adequately programmed to generate and deliver Intense Pulsed Light in certain wave lengths and at different speeds in order to achieve skin treatments with spectacular results.

Light therapy is non abrasive, non invasive and does not require injections, which makes it the most effective non-surgical skin repair technique available today.

WHICH VISIBLE RESULTS?

Curative care

As we grow older, cell regeneration slows down and the skin loses its glow.

Thanks to the action of Or-Light, and its active stimulation of the fibroblasts, the skin is revitalized and rejuvenated. Collagen production is vividly reactivated causing the skin to be visibly firmed and toned.

After the very first session skin will look firmer, complexion more radiant and texture smoother. With each further treatment, the skin will feel clearer, more supple and will feel a lot softer.

Preventive care

Not only the intense pulse light therapy provides an excellent curative care it is also extremely effective as a preventive anti ageing treatment. Therefore it can effectively be used from the age of 25 when skin sometimes begins to show the first tiny signs of ageing.

TIMESCALE

3 to 5 sessions are estimated as a minimum for a treatment program and up to 10 for a complete program.

Two treatments a year are recommended to maintain visible effects.

