

Q-beam

Q-Switched Nd: YAG laser



Q-Switched Nd:YAG laser



1064nm-F0

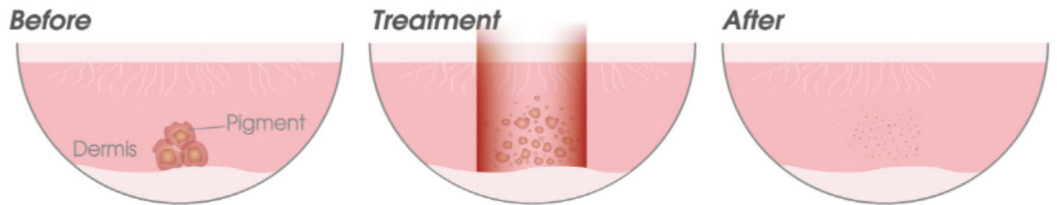


Using 1064nm-F0

After applying the carbon cream, the carbon particles absorb the laser light and explode instantly, removing impurities and keratin on the skin surface and helping to regenerate collagen.



1064nm-F50

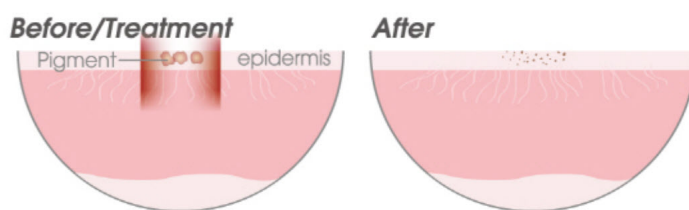


Using 1064nm-F50

for pigment disease at dermis layer with strong energy Tattoo, nevus of Ota



532nm-F50



Using 532nm-F50

for pigment disease at epidermis layer with strong energy Freckles, age spot, blemish



SPECIFICATION

Laser Type	Q-switched ND:YAG Laser
Mode	DIRECT BEAM MODE
Energy	1064nm : 100~1000mj (50mj unit)
	532nm : 20~500mj (20mj unit)
Lens Type	1064-F50, 1064-F0, 532-F50
Dimension	220x230x440mm
Weight	20Kg
Power	220 ~ 230VAC, 50 ~ 60Hz